

Rebar Prerequisite Software Installation Guide

Doc. Version 1.2
22-June-2003

Amendment History

Project Name: *Rebar Prerequisite Software Installation Guide*

Amendment History—Document Status (e.g. Draft, Final, Release #): Release 1.2

CR# (optional)	Document Version #	Approval Date	Modified By	Section, Page(s)and Text Revised
	V1.0	02/28/2003	Lauri McIntosh	Created initial document from original <i>Rebar QuickPort Migration Guide</i> .
32	V1.1	04/08/2003	Lauri McIntosh	<ul style="list-style-type: none"> ▪ Removed quick reference section and all references to it (including table of contents entries). ▪ Made references to page numbers within this document into hyperlinks; used Update Field function to update page number references.
??	V1.2	04/21/2003	Lauri McIntosh	<ul style="list-style-type: none"> ▪ Added links to Step references on these pages: <ul style="list-style-type: none"> – 2—#3 table, “Step 4” – 2—#7 table, “Step 4” – 4—Determine if Vis. Studio .NET Installed, “Step 1” – 4—Update Windows Components table, “Step 2” – 14—table, “Step 5” (2 places) – 14—table, “Step 8” (2 places) ▪ Renamed file to add version #.
??	V1.2	05/19/2003	Lauri McIntosh	<ul style="list-style-type: none"> ▪ Corrected coyright date. ▪ Changed page number format to “Page xx of yy.” ▪ Removed blank final page.
??	V1.2	05/20/2003	Lauri McIntosh	<ul style="list-style-type: none"> ▪ Changed contractions to their original two words.
??	V1.2	06/22/2003	Lauri McIntosh	Updated URLs for EADS web site.

Table of Contents

Rebar Prerequisite Software Installation Guide

Amendment History.....	ii
Introduction: <i>Rebar Prerequisite Software Installation Guide</i>	iv
Purpose	iv
Audience.....	iv
Prerequisites	iv
About Rebar.....	v
Rebar	v
Rebar QuickPort Framework	v
Rebar Documentation	v
Online Rebar Documentation.....	vi
Preparation Steps.....	vii
Introduction	vii
You Must Have:.....	vii
You Must Do:	vii
You Must Know:	vii
Approximate Time to Complete Rebar Prerequisite Software Installation.....	vii
Chapter 1: Install Internet Information Services (IIS)	1
Introduction	1
Confirm or Install Internet Information Services (IIS)	1
Chapter 2: Install Visual Studio .NET	4
Introduction	4
Make All Critical Windows Updates.....	4
Determine if Visual Studio .NET is Already Installed	4
Update Windows Components	4
Install Visual Studio .NET Files.....	5
Chapter 3: Install .NET Framework Service Pack	8
Introduction	8
Download the .NET Service Pack 2	8
Install the .NET Service Pack 2	9
Chapter 4: Install MSDN Library.....	11
Introduction	11
Install MSDN Library.....	11
Summary and Help.....	17
Next Steps.....	17
Online Rebar Documentation	17
Contact Us	17

Introduction: *Rebar Prerequisite Software Installation Guide*

Purpose

To document the steps developers must take to **install the software required** to begin the Rebar framework installation process:

- **Internet Information Services (IIS)**—Must be running on your machine as part of the development process. IIS was probably installed during your installation of Windows 2000 or Windows XP; however, you should take a moment to verify this.
- **Visual Studio .NET** integrated development environment (IDE)—Must be installed on your machine before you can develop ASP.NET applications.
- **.NET Framework**—Rebar is built on—and extends—the .NET Framework, a new computing platform that simplifies application development in the highly distributed Internet environment. The framework has two main components:
 - **The common language run-time**—Provides core services such as memory management and thread management while also enforcing strict type safety and other forms of code accuracy.
 - **.NET Framework class library**—The object-oriented class library is a collection of reusable types that tightly integrate with the common language run-time.
- **Microsoft Developer Network (MSDN) Library**—Because the MSDN Library contains the Visual Studio .NET documentation, all ASP.NET developers will need it.

Audience

Developers who use ASP or ASP.NET who need to create web applications for Client EDS.

Prerequisites

Users of the *Rebar Prerequisite Software Installation Guide* should have the following skills and experience:

- Ability to launch and perform basic functions of the following software tools (they do not need to be familiar with the advanced functions of the tool):
 - Internet Explorer 6.0
 - Visual Source Safe 6.0
 - Internet Information Services administration (within the Microsoft Management Console)
 - Add/Remove Programs utility
- Experience with Visual Studio.NET is not required.

**About
Rebar****Rebar**

Rebar is a common application development framework that can be reused across all applications created by Development Services. The Rebar framework builds upon the Microsoft .NET Framework to provide value-added functionality that is normally required, but traditionally re-invented, by each development effort. When a new application is created, the development team starts with the Rebar framework and simply adds the parts that are unique to its specific application.

Advanced developers can focus on architecting the more unique aspects of a system, since most of the common needs are built into the framework. All developers have the ability, and are encouraged, to influence and assist with improving any of Rebar's common code.

Rebar is not the following:

- A new programming language
- A CASE tool such as Incase or PACBASE
- “Black box” shrink-wrapped software
- An attempt to shield developers from .NET technology
- An all-or-nothing framework

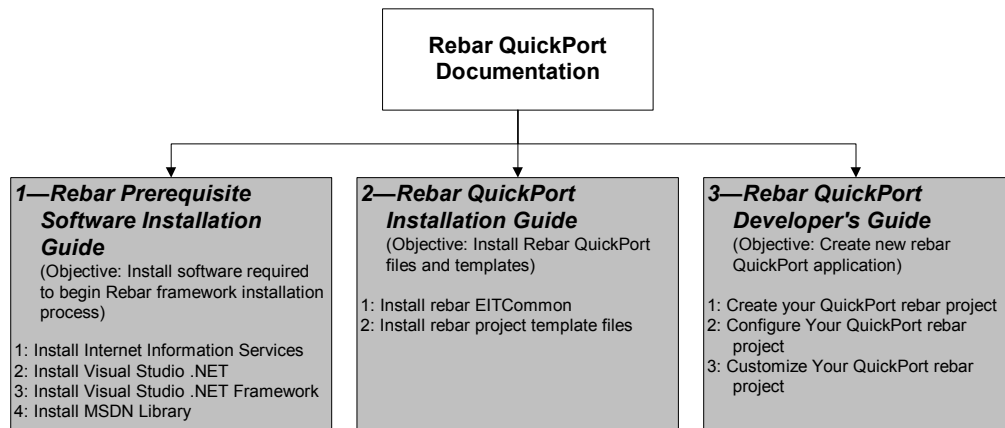
Rebar QuickPort Framework

The Rebar **QuickPort** framework is an intermediate version of Rebar that allows developers to quickly and easily port their existing ASP applications to ASP.NET, taking advantage of the enhanced performance and debugging capabilities inherent in Visual Studio .NET.

Rebar Documentation

The Rebar QuickPort documentation will take you through the installations and other steps necessary to get the Rebar QuickPort framework up and running on your development machine. Documentation includes the following (used in this order):

1. **Rebar Prerequisite Software Installation Guide** (this guide)
2. *Rebar QuickPort Installation Guide*
3. *Rebar QuickPort Developer's Guide*



Online Rebar Documentation

You can find Rebar documentation online at

<http://eads.eit.eds.com/EADS/development/rebar/overview.aspx>.

This guide is a living document that will evolve over time with additions and changes, especially as new versions of Rebar are released. Therefore, we need your suggestions to improve the guide. Please contact the [EIT - DS Arch Services MB](#) email box with your suggestions, corrections, or questions.

Preparation Steps

Introduction Before you begin your Rebar Prerequisite Software Installation, there are several things you must have, do, or know.

You Must Have:

- *Visual Studio .NET Component Update* CD
- Visual Studio .NET installation CDs (4 disks)
- Administrator privileges on your computer
- Access to the EIT SourceSafe directories (contact the [EIT - DS Arch Services MB](#) email box if you do not have access)
- Access to the \\usplseit001\MSDNdotNet EIT network server share

You Must Do:

- Prepare at least **700 MB** of space **on your hard drive** for the various installations and downloads required. You will need 300 MG of this space on your C: drive and the rest wherever you want, because Visual Studio .NET downloads certain files to C: even when you specify another drive for downloads. You will download some or all of the following:
 - **Visual Studio .NET**—210 MB
 - **Internet Information Services component** (if not already installed)
 - Any **critical Windows updates** from the MS Windows Update web site
 - **.NET Service Pack 2** installation and setup files
 - **MSDN Library**—450 MB to 1.5 GB, depending on which setup option you choose
- Go to the Windows Update web site and **make all critical Windows updates**.
- **Disable PassKey** if it is running on your local machine.

You Must Know:

- How to launch and perform basic functions of the following software tools:
 - Internet Explorer 6.0
 - Visual Source Safe 6.0
 - Internet Information Services administration
 - Add/Remove Programs utility
 - (Experience with Visual Studio.NET is not required.)

Approximate Time to Complete Rebar Prerequisite Software Installation

Chapter	Approximate time (minutes) <u>IF all preparation tasks are done beforehand</u>
1 Install Internet Information Services (IIS)	5
2 Install Visual Studio .NET	30
3 Install .NET Framework Service Pack	10
4 Install MSDN Library	20
Total	60 (approximately 1 hour)

Chapter 1: Install Internet Information Services (IIS)

Introduction

You will need Internet Information Services (IIS) running on your machine as part of the development process. IIS was probably installed during your installation of Windows 2000 or Windows XP; however, you should take a moment to verify this.

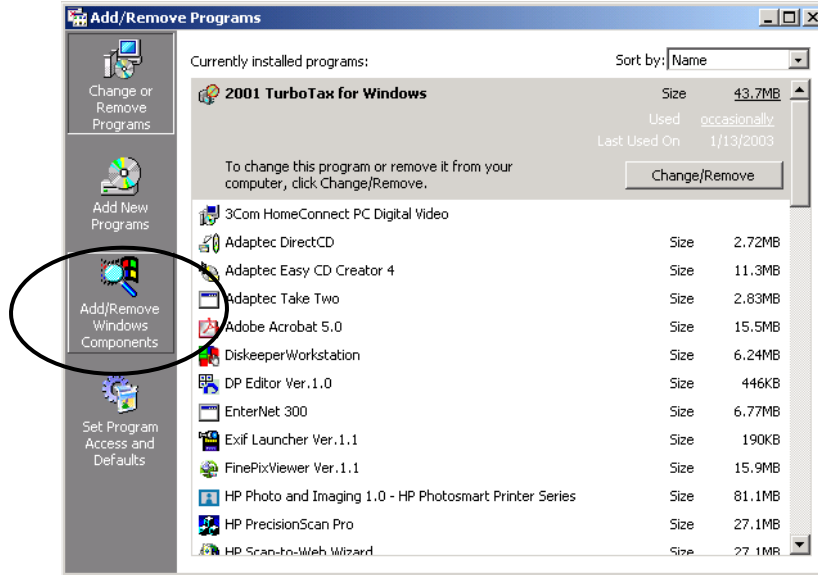
Confirm or Install Internet Information Services (IIS)

Error! AutoText entry not defined.confirm or install IIS:

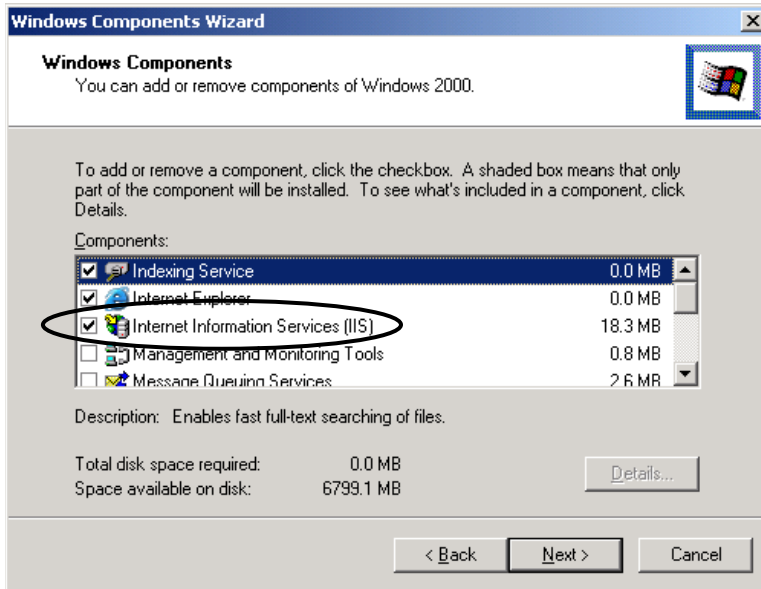
1. Open **Add/Remove Programs**.

If:	Then:
You are running Windows <u>2000</u> ...	Click the Start button at the bottom left of your Windows screen to bring up the Start menu. Then choose in this order: <ul style="list-style-type: none"> ▪ <u>Settings</u> ▪ Control Panel ▪ Add/Remove Programs
You are running Windows <u>XP</u> ...	Click the Start button at the bottom left of your Windows screen to bring up the Start menu. Then choose in this order: <ul style="list-style-type: none"> ▪ Control Panel ▪ Add/Remove Programs

2. On the left side of the **Add/Remove Programs** window, click **Add/Remove Windows Components**.

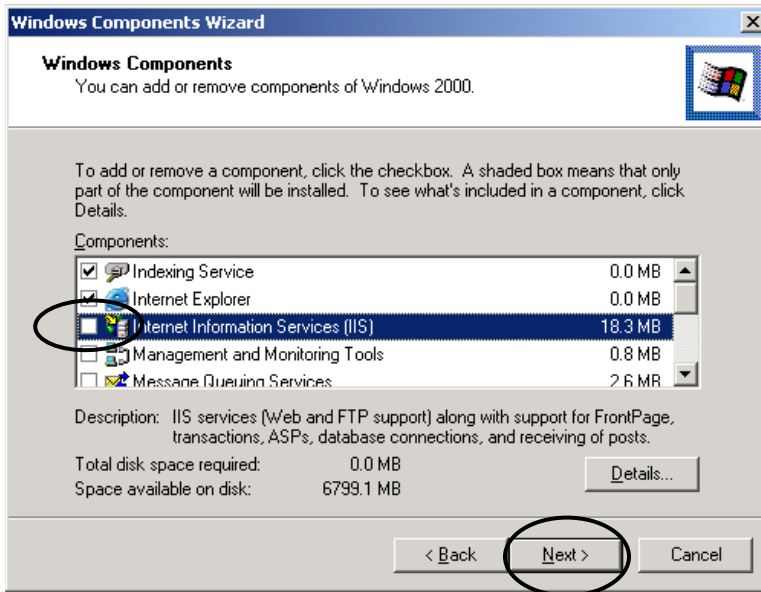


- In the **Windows Components Wizard** window, find Internet Information Services in the Components list. Is the **Internet Information Services (IIS) check box selected**?



If:	Then:
IIS check box <u>is</u> checked...	Click the Cancel button and go on to Chapter 2: Install Visual Studio .NET on page 4. IIS is already installed, and you are finished with this part of the process.
IIS check box is <u>NOT</u> checked...	GO to Step 4 below.

- If the Internet Information Services (IIS) check box is not checked in the Windows Component Wizard window, **check** it. Then click the **Next** button to start the Windows Components Wizard and begin the installation process.



5. When IIS installation is complete, you will see the **Completing the Windows Components Wizard** window. Click the **Finish** button to close the wizard and return to the Add/Remove Programs window.



6. Close the **Add/Remove Programs** window.

Chapter 2: Install Visual Studio .NET

Introduction The Visual Studio .NET integrated development environment (IDE) must be installed on your machine before you can develop ASP.NET applications.

Make All Critical Windows Updates

1. If you did not go to the Windows Update web site and make all critical Windows updates to your computer before starting the Rebar Prerequisite Software Installation process, you must do that now. See [Preparation](#) chapter on page vii.

Determine if Visual Studio .NET is Already Installed

If:	Then:
Visual Studio .NET is <u>already</u> installed on your machine...	GO to Chapter 3: Install .NET Framework , on page 8.
Visual Studio .NET is NOT installed on your machine...	GO to Step 1 below.

Update Windows Components

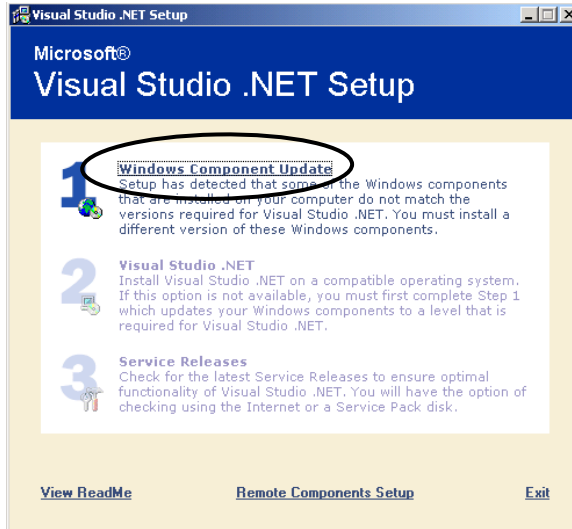
You may need to upgrade certain Windows components before you can install Visual Studio .NET. Error! AutoText entry not defined.**update your Windows components:**

1. Insert the *Visual Studio .NET Disk 1* into the CD drive; the **Visual Studio .NET Setup** window will appear.

If:	Then:
Visual Studio .NET Setup window appears...	GO to Step 2 below.
Setup program does NOT start automatically...	Open the CD drive in MS Windows Explorer and double-click the Setup.exe file icon. Setup window will appear.

- You may be asked to update required Windows components before the Visual Studio .NET setup can begin.

If:	Then:
Option 1 Windows Component Update is highlighted on the Visual Studio .NET Setup window...	<ol style="list-style-type: none"> Click setup option 1 Windows Component Update. You will be asked to insert the <i>Visual Studio .NET Component Update</i> CD.
Option 2 Visual Studio .NET is highlighted on the Visual Studio .NET Setup window...	GO to the next section, " Install Visual Studio .NET Files ," below.

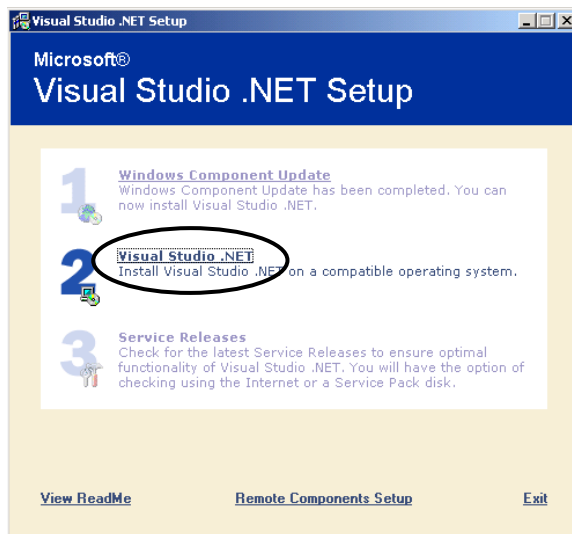


- After making any needed Windows component updates, you will return to the **Visual Studio .NET Setup** window.

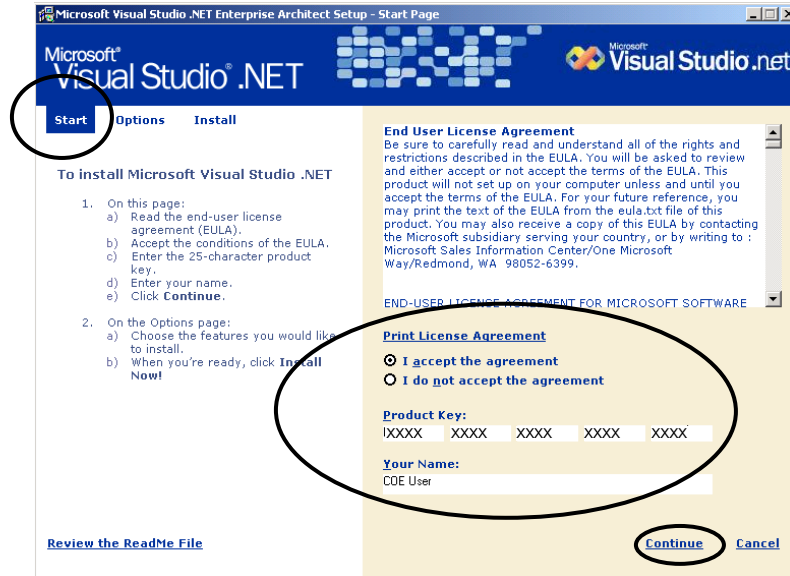
Install Visual Studio .NET Files

Error! AutoText entry not defined.**install Visual Studio .NET files:**

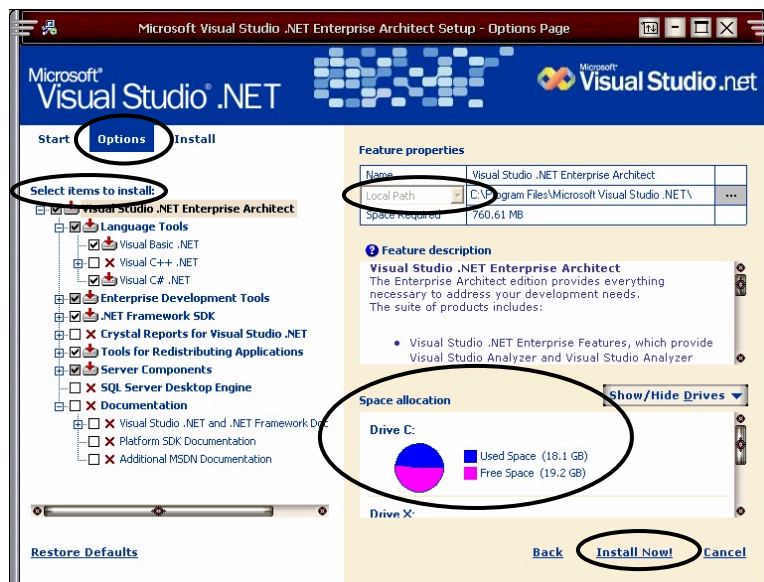
- In the **Visual Studio .NET Setup** window, click option 2 **Visual Studio .NET**.



2. In the Visual Studio .NET Setup **Start** window, do the following:
 - Click the **“I accept the agreement”** radio button below the End User License Agreement.
 - **Product Key** field—you may find this 20-character key physically written on the Visual Studio .NET installation CDs. Otherwise, you must get it from the <http://msdn.microsoft.com/subscriptions/resources/subdwld.asp> web site. Once you have this key, enter it in the Product Key field.
 - **Your Name** field—enter your **first and last name**.
 - Click the **Continue** link at the bottom of the window.



3. In the Visual Studio .NET Setup **Options** window, expand the **Select items to install** tree on the left side of the window and do the following:
 - **Language Tools** folder:
 - Visual Basic .NET—check (required)
 - Visual C++ .NET folder—uncheck
 - Visual C# —check (optional)
 - **Enterprise Development Tools** folder—leave as is
 - **.NET Framework SDK** folder—check (required)
 - **Crystal Reports for Visual Studio .NET** folder—uncheck
 - **Tools for Redistributing Applications** folder—check (required)
 - **Server Components** folder—leave as is
 - **SQL Server Desktop Engine** folder—uncheck
 - **Documentation** folder—uncheck (this documentation is old)
4. In the **Feature properties Local Path** field, you may need to change drives in the **Local Path** field (based on how much free space you made on your hard drives in the Preparation chapter).
5. In the **Space allocation** field, check to make sure you have enough hard drive space for the installation.
6. Click the **Install Now!** link at the bottom of the window.



7. You will be asked to insert **Visual Studio .NET Disks 2, 3, and 4** as the installation progresses.
8. You will see an “**installation complete**” message when the installation is finished.

Chapter 3: Install .NET Framework Service Pack

Introduction

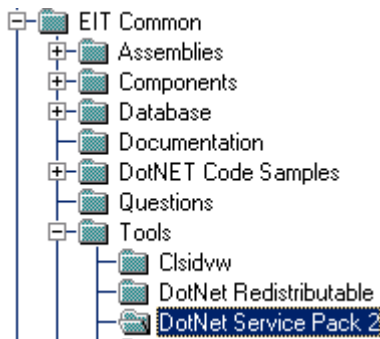
Rebar is built on—and extends—the .NET Framework. The **.NET Framework** is a new computing platform that simplifies application development in the highly distributed Internet environment. The framework has two main components:

- **The common language run-time**—The run-time provides core services such as memory management and thread management while also enforcing strict type safety and other forms of code accuracy.
- **.NET Framework class library**—The object-oriented class library is a collection of reusable types that tightly integrate with the common language run-time.

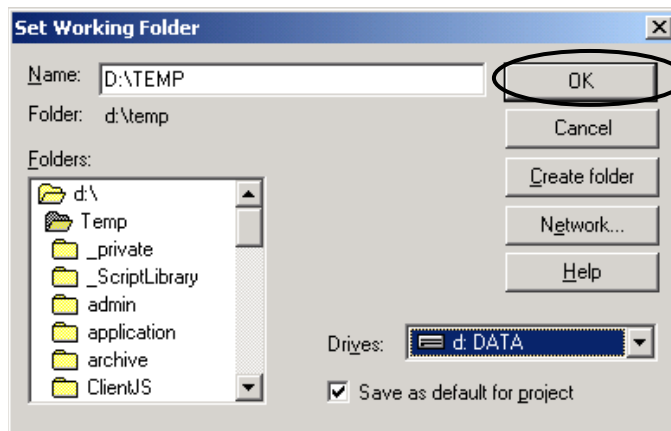
Download the .NET Service Pack 2

Error! AutoText entry not defined. download the .NET Service Pack 2 from Visual SourceSafe:

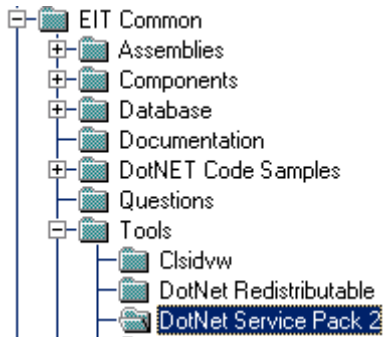
1. In **Visual SourceSafe**, locate the **\$/EIT Common/Tools/DotNet Service Pack 2** folder:



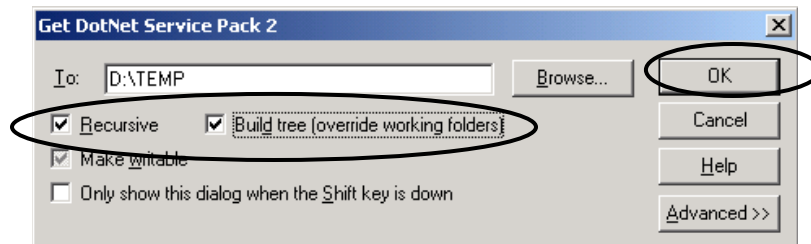
2. Right-click the **DotNet Service Pack 2** folder and choose **Set Working Folder...** from the popup menu that appears.
3. In the **Set Working Folder** dialog box, select **any convenient folder on your hard drive** (example: **d:\Temp**) and click the **OK** button.



- Back in **SourceSafe**, right-click the **DotNet Service Pack 2** folder again and choose **Get Latest Version...** from the popup menu that appears.



- In the **Get DotNet Service Pack 2** dialog box, check the **Recursive** and **Build tree** check boxes and click the **OK** button.

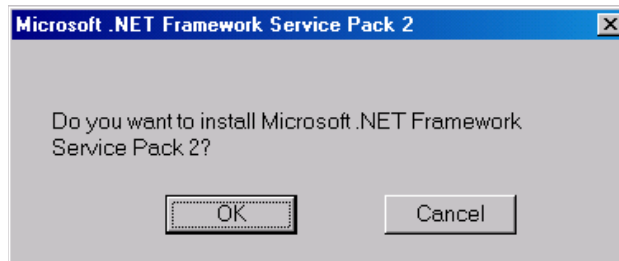


- The **.NET Framework Service Pack 2 install file** will be downloaded to the directory you specified (example: **D:\TEMP**).
- Close** Visual SourceSafe.

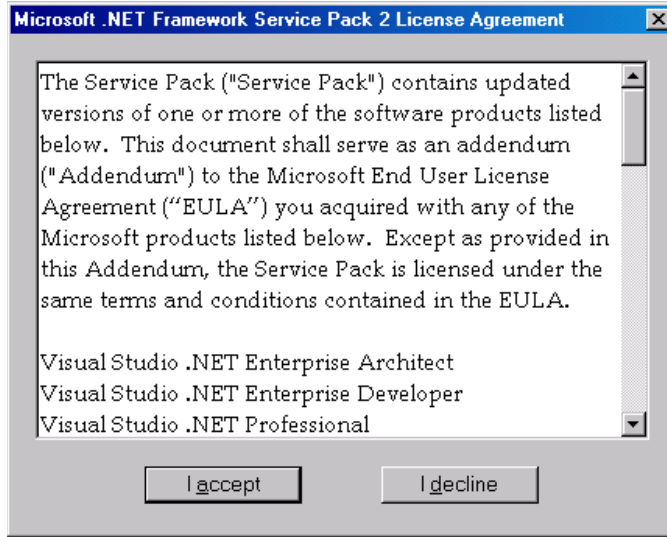
Install the .NET Service Pack 2

Follow these steps to install the .NET Service Pack 2.

- In **Windows Explorer**, locate the folder where you downloaded the **Service Pack 2 install file**. Run **NDP10_SP_Q321884_En.exe**.
- When the **Microsoft .NET Framework Service Pack 2** dialog box asks if you want to install the file, click the **OK** button.



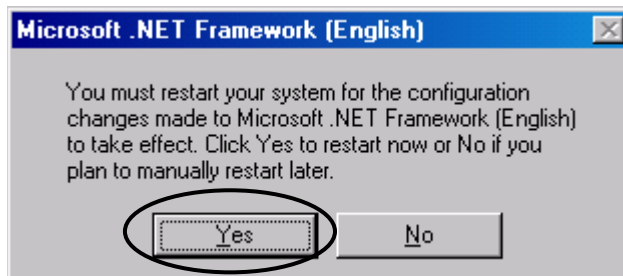
3. In the **Microsoft .NET Framework Service Pack 2 License Agreement** dialog box, click the **“I accept”** button.



4. You will see the progress of the installation in the **Microsoft .NET Framework** dialog box.
5. When installation is complete, click the **OK** button in the **“successfully installed”** dialog box.



6. When you are asked to **restart** your computer, click the **Yes** button.



Chapter 4: Install MSDN Library

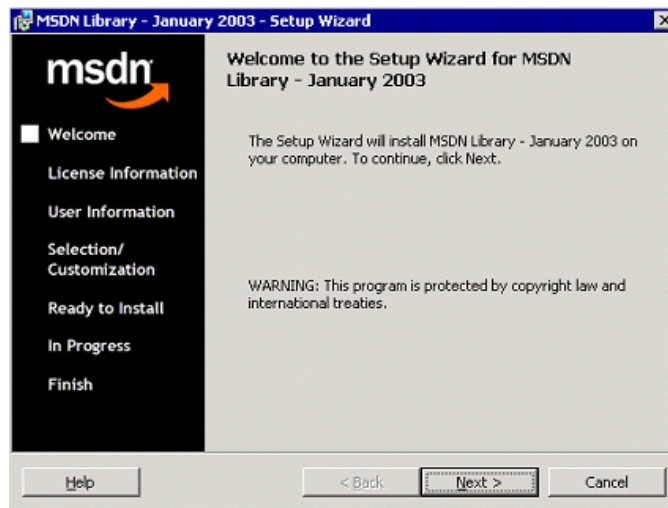
Introduction

Because the **Microsoft Developer Network (MSDN) Library** contains the Visual Studio .NET documentation, all ASP.NET developers will need it.

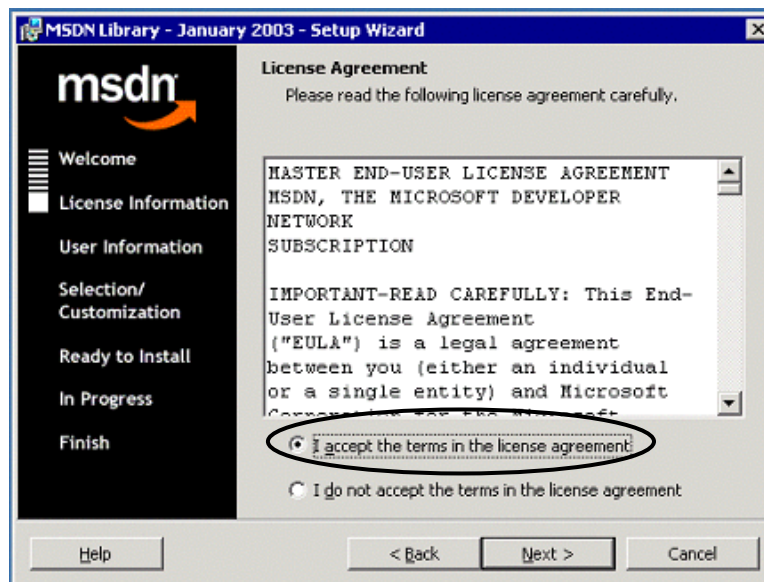
Install MSDN Library

Error! AutoText entry not defined.install the MSDN Library files:

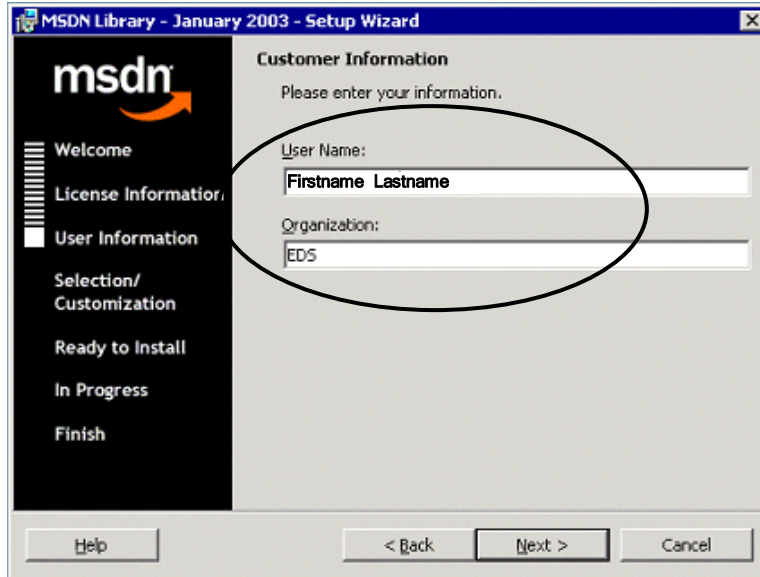
1. In **Windows Explorer**, locate the \\usplseit001\MSDNdotNet folder and run the **setup.exe** application. (You can also click Start▶Run and enter the path if you do not have a drive mapped to this location.)
2. In the **MSDN Library Setup Wizard Welcome** dialog box, click the **Next** button.



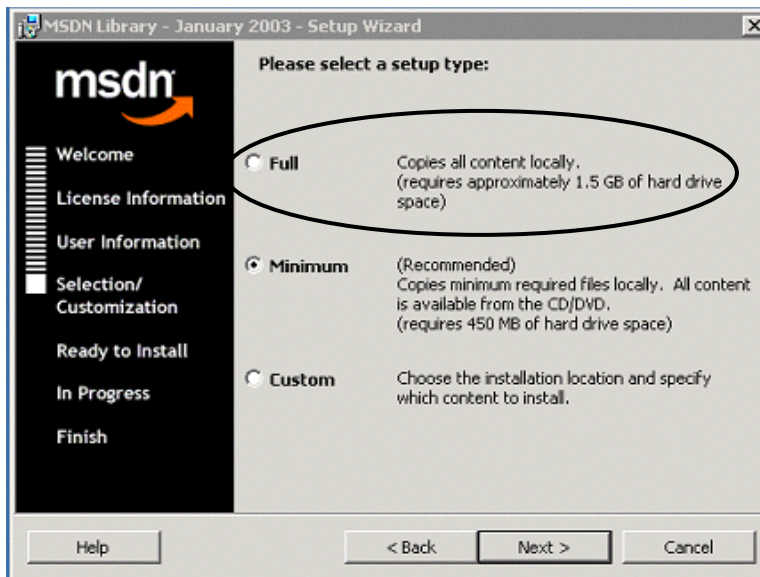
3. In the **License Agreement** dialog box, select the **I accept the terms in the license agreement** option and click the **Next** button.



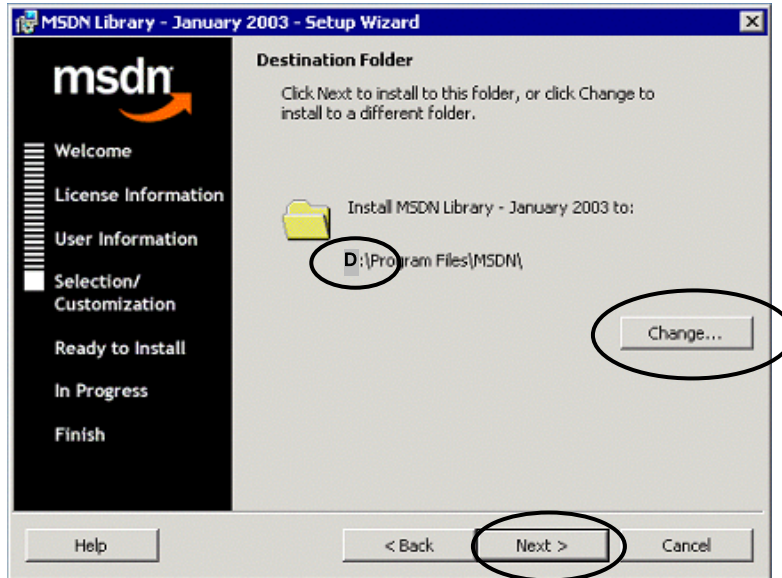
4. In the **Customer Information** dialog box, do the following:
 - **User Name** field—enter **your name**.
 - **Organization** field—enter **EDS**.
 - Click the **Next** button.



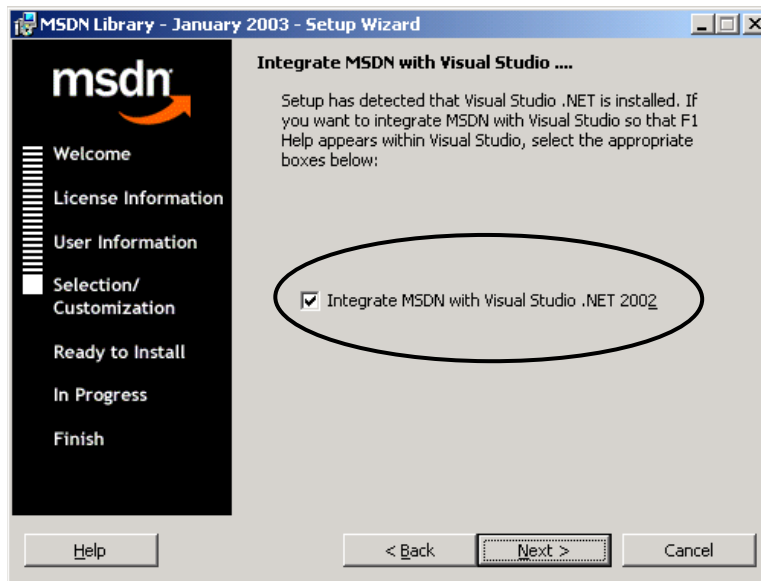
5. In the **Please select a setup type** dialog box, select a setup type (based on the amount of hard drive space you have available) and click the **Next** button. (We recommend the **Full** setup type if you have enough space; this way, you can access Help info when you are not connected to the network.)



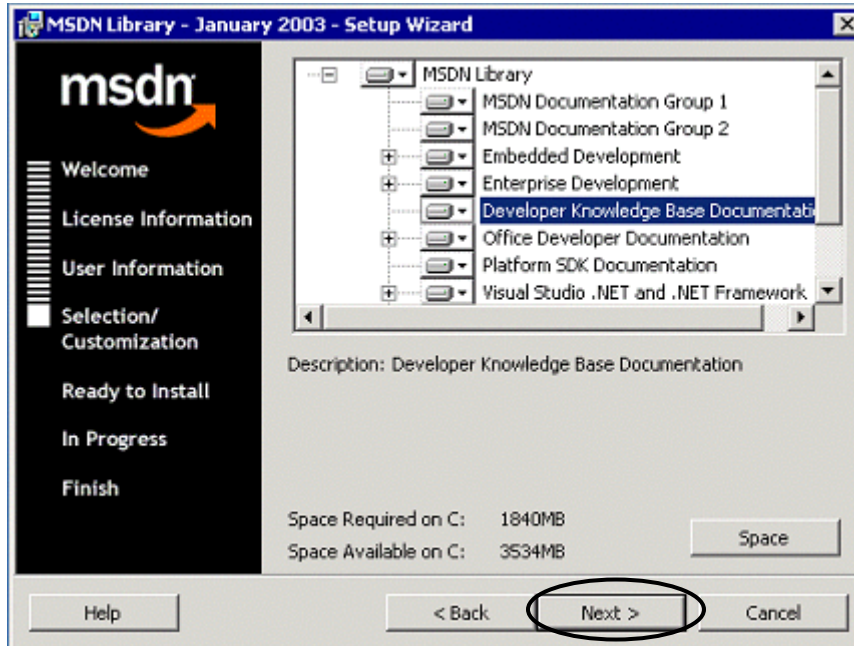
- In the **Destination Folder** dialog box, click the **Change** button if you need to specify a different install folder. Because this download is large (approximately 1.5 GB), consider putting it on your D: drive. When the correct folder is displayed, click the **Next** button.



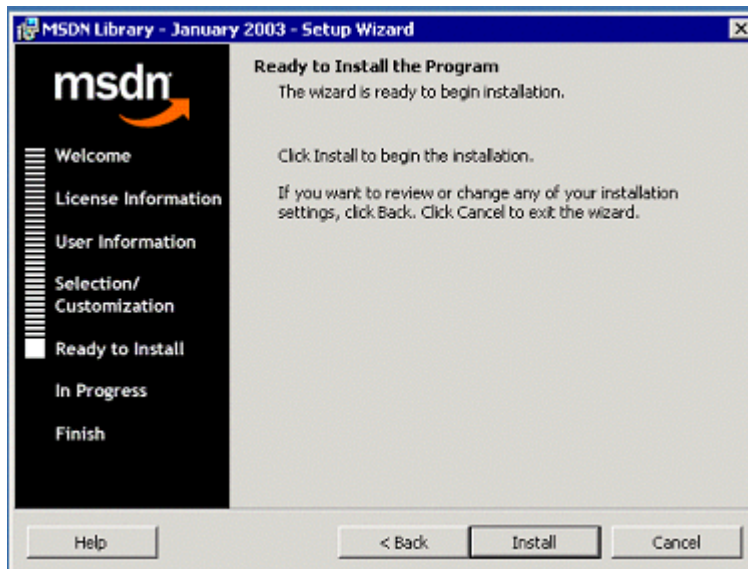
- You may see the “**Integrate MSDN with Visual Studio...**” dialog box. If you do, be sure the “Integrate MSDN with Visual Studio .NET 2002” check box is **checked**.



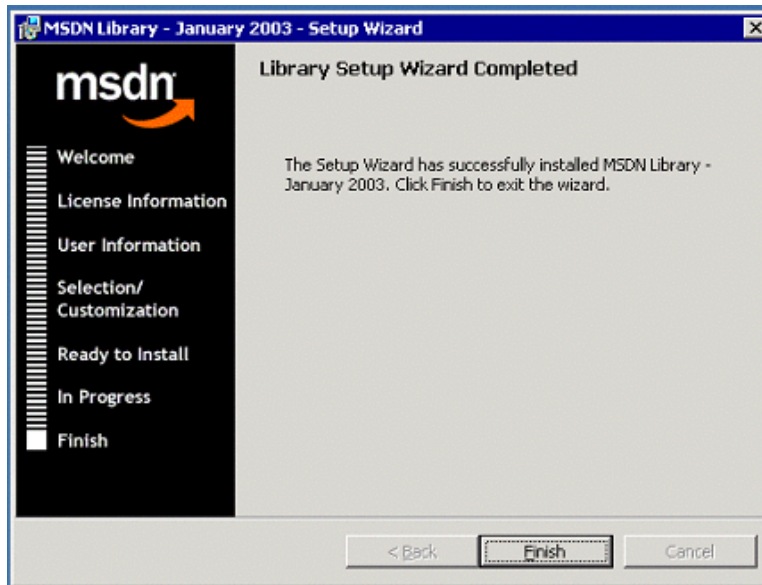
If:	Then:
You selected Custom setup in Step 5 above...	<ul style="list-style-type: none"> ▪ Use the dropdown buttons here to identify which sections of documentation you want to download to your local drive and which ones you want to access from the network. ▪ Click the Next button and GO to Step 8 below.
You did NOT select Custom setup in Step 5 above...	GO to Step 8 below.



8. In the **Ready to Install the Program** dialog box, click the **Install** button.



9. In the **Library Setup Wizard Completed** dialog box, click the **Finish** button.



Summary and Help

You have now installed all the software you will need to begin the Rebar framework installation process:

- **Internet Information Services (IIS)**—Must be running on your machine as part of the development process. IIS was probably installed during your installation of Windows 2000 or Windows XP.
- **Visual Studio .NET** integrated development environment (IDE)—Must be installed on your machine before you can develop ASP.NET applications.
- **.NET Framework**—Rebar is built on—and extends—the .NET Framework, a new computing platform that simplifies application development in the highly distributed Internet environment. The framework has two main components:
 - **The common language run-time**—Provides core services such as memory management and thread management while also enforcing strict type safety and other forms of code accuracy.
 - **.NET Framework class library**—The object-oriented class library is a collection of reusable types that tightly integrate with the common language run-time.
- **Microsoft Developer Network (MSDN) Library**—Because the MSDN Library contains the Visual Studio .NET documentation, all ASP.NET developers will need it.

Next Steps

Now you should use the next guide in the Rebar documentation series, the *Rebar QuickPort Installation Guide*, to install your Rebar framework-specific software.

Rebar QuickPort documentation includes the following (used in this order):

1. *Rebar Prerequisite Software Installation Guide* (this guide)
2. *Rebar QuickPort Installation Guide*
3. *Rebar QuickPort Developer's Guide*

Online Rebar Documentation

You can find Rebar documentation online at <http://eads.eit.eds.com/EADS/development/rebar/overview.aspx>.

Contact Us

The *Rebar Prerequisite Software Installation Guide* is a living document that will evolve over time with additions and changes, especially as new versions of Rebar are released. Therefore, we welcome and need your suggestions for improving the guide. Please contact the [EIT - DS Arch Services MB](#) email box with your suggestions, corrections, or questions.